



MAINTENANCE AND CARE INSTRUCTIONS

Olympia products are designed and engineered under strict quality standards. Regular and proper care of our products will ensure years of trouble free service. To clean, simply wipe with a damp, soft cloth. Do not use abrasive or harsh cleaners as they may result in finish damage. Regularly remove the aerator and clean any debris inside it.

TROUBLE SHOOTING

A. If water leaks from the spout outlet:	1. Shut off both hot and cold water supplies.
	2. Use 3/32" hex wrench to loosen handle set screw and remove handles (A1-A3), bonnet nuts (B), and cartridges (C).
	3. Check and replace springs and seats (D). If they are damaged.
	4. Reassemble handles (A), bonnet nuts (B), and cartridges (C). NOTE: Make sure cartridge stops face toward spout (I).
	5. If seepage still occurs, replace cartridges (C).
B. If water leaks under the faucet:	1. Shut off both hot and cold water supplies.
	2. Loosen spout bonnet nut (3,8) and gently pull off spout (I1,I2).
	3. Replace O-Rings (5), and carefully reassemble spout (I) and spout bonnet nut (3,8). NOTE: Be careful not to damage O-Rings when gently securing spout bonnet nut (3,8).
C. If faucet has low flow:	1. Remove aerator, clean all internal debris, and make sure the rubber washer is not damaged before tightening the aerator back.
	2. Repeat Trouble Shooting "A" and clean any debris trapped in the seats and springs (D).
D. If handles do not stop turning:	1. Shut off both hot and cold water supplies.
	2. Remove handles (A1-A3) and bonnet nuts (B).
	3. Check stops on cartridges (C) or inside handles (A1-A3) for damages.
	4. Replace necessary parts.
E. If spray does not function properly:	1. Shut off both hot and cold water supplies.
	2. Remove spray head (K), clean out any debris within the head, and reassemble spray head.
	3. Loosen spout bonnet nut (3,8) and gently pull off spout (I1,I2) without damaging O-Rings (5).
	4. Clean or replace diverter piston (J).
	5. Reassemble spout.

OLYMPIA FAUCETS, INC. LIMITED LIFETIME WARRANTY *

Olympia Faucets, Inc. warrants its products to the original consumer purchaser to be free from defects in material and workmanship as long as the consumer purchaser owns it. Dated proof of purchase must accompany all warranty claims. PVD finishes carry a lifetime warranty in residential service.

Olympia Faucets, Inc. will replace, free of charge, to the original consumer purchaser, any and all parts that prove defective under normal installation, use, and service. Damage as a result of misuse, abuse, accident, or improper installation, will consequentially void this warranty. Replacement parts can be obtained from your local dealer or directly from Olympia Faucets. Olympia Faucets, Inc. recommends using a certified plumber for all faucet installation and repair.

This warranty is limited to replacement of defective parts only. Incidental and consequential damages, labor charges, repair, or replacement costs are expressly excluded. Some states do not allow the exclusion or limitation of incidental or consequential damages, so the above limitation may not apply to you. This warranty gives you specific legal rights, as you may have other rights of which vary from state to state.

Installation or maintenance and cleaning must be in compliance with instructions furnished with every Olympia product. If you find a problem with your product, please immediately contact your nearest Olympia Faucets, Inc. dealer or sales representative.

* 2 year limited warranty on commercial and multi-family projects.



INSTALLATION AND MAINTENANCE INSTRUCTIONS FOR OLYMPIA TWO HANDLES KITCHEN FAUCETS

THIS PRODUCT MEETS THE FOLLOWING STANDARDS: ASME A112.18.1 ~ ANSI A117.1 ~ ANSI / NSF 61, SECTION 9 ~ UPC / IAPMO LISTED / ADA COMPLIANT ~ COMPLIES WITH CALIFORNIA LEAD PLUMBING LAW

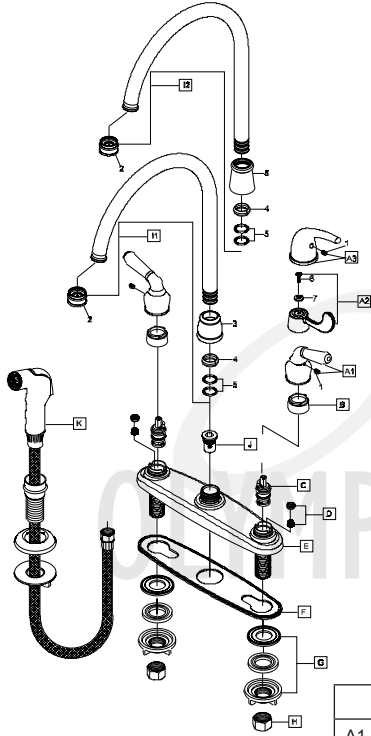
PRODUCT NUMBERS

- #K-5340** Lever Handles ~ Less Spray
- #K-5342** Lever Handles ~ With Spray
- #K-5350** ADA Wrist Blade Handles ~ Less Spray
- #K-5370** Lever Handles ~ Less Spray
- #K-5372** Lever Handles ~ With Spray





Thank you for purchasing this quality product. Olympia products are rigorously tested to provide long service under normal conditions. Prior to installation, familiarize yourself with this parts diagram. Make sure that you have all of the illustrated parts for your Olympia product before installation.



ITEM #	DESCRIPTION
1	OP-490029 Allen Screw
2	OP-490057 1.5 GPM Aerator
3	OP-490028 Spout Bonnet Nut
4	OP-490038 Spout snap ring
5	OP-490039 Spout O-ring
6	OP-450013 Handle Screw
7	OP-490001C,H Cold & Hot Indicator
8	OP-450010 Spout Bonnet Nut (For K-5370, K-5372)

ITEM #	DESCRIPTION
A1	OP-190010C,H Lever Handle Cold, Hot (For K-5340, K-5342)
A2	OP-190014C,H ADA Handle, Cold, Hot (For K-5350)
A3	OP-190015C,H Lever Handle Cold, Hot (For K-5370, K-5372)
B	OP-490040 Bonnet Nut
C	OP-390004 Cartridge- Brass Post
D	OP-490041 Springs and Seats
E	OP-420025 Deck Plate
F	OP-420026 Base Gasket
G	OP-520009 Mounting Locknut & Washers
H	OP-590001 Supply Nut
I1	OP-220004 Gooseneck Spout
I2	OP-220005 Gooseneck Spout (For K-5370, K-5372)
J	OP-420024 Diverter Piston
K	OP-420038 Side Spray Assembly



For more care information or trouble shooting inquiries about your Olympia product, please call:
OLYMPIA FAUCETS, INC. (888) 772-7701
 Central Standard Time: 8:00am ~ 7:00pm
www.olympiafaucets.com

INSTALLATION INSTRUCTIONS

Tools you will need:

- Plumbers Putty
- Screwdriver
- Pipe Wrench
- Basin Wrench
- Teflon Tape
- Flexible Supply Lines
- Adjustable Wrench
- Soft Cloth

FAUCET INSTALLATION:

- Carefully shut off both hot and cold water supplies from under the sink. Plug the sink drain with a soft cloth to prevent intrusion of debris or the loss of any faucet parts. If this installation is for a replacement, carefully remove the existing faucet and clean the entire surface of the sink mounting holes.
- Apply adequate plumbers putty along the boundary of the bottom of the base gasket (F).
- Gently align the faucet with the sink mounting holes and place the faucet on the sink. Use caution to lead brass waterways through the sink mounting holes.
- Thread friction washers and mounting locknuts (G) along the brass waterways. Carefully hand tighten the mounting locknuts. **CAUTION:** Do not overtighten.
- Connect both hot (LEFT INLET) and cold (RIGHT INLET) waterways to water supply lines. **NOTE:** If additional adapters or supply lines are required, they may be purchased from the same location where this faucet was purchased. Use with teflon tape when attaching supply lines to waterways.

SPRAY ASSEMBLY INSTALLATION:

- Place spray hose guide in far right hole of sink and then attach both the washer and locknut from underneath the sink.
- Insert the compression nut end of spray hose down through the hose guide. Pass hose through the center hole in base gasket and attach to the center faucet outlet, hand tightening securely. **Note:** Use teflon tape on this connection.

FINAL PRODUCT INSTALLATION:

- Turn on the hot and cold water supplies. Check all around for any minor joint leaks. **NOTE:** Inspect for any leaks around the connections to both the supply lines and the spray hose assembly.
- Remove aerator (2) from end of spout. Turn on both side of handles to flush water lines by allowing water to run through for one minute. Replace aerator (2).
- For faucet with side spray check if water diverts fully from spout to side spray and from side spray to spout.

CAUTION: MAKE SURE TO TIGHTEN THE AERATOR SECURELY AFTER FLUSHING THE WATER LINES.